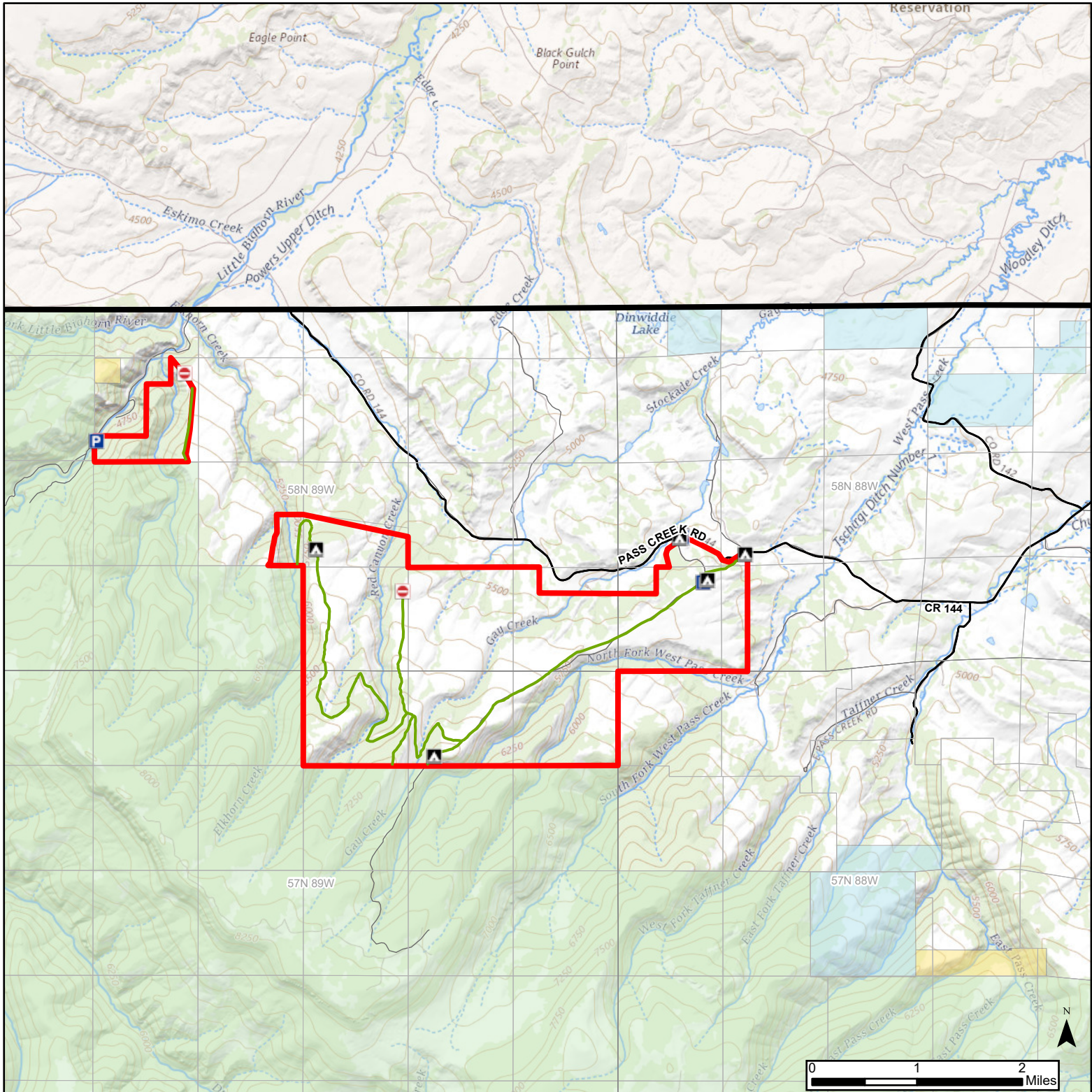




# Kerns

## Wildlife Habitat Management Area

Open Dates:  
THIS AREA OPENS TO ALL  
HUMAN PRESENCE AT  
8:00AM JUNE 1.



WHMA_ROWS	Boat Ramp	Fish Cleaning Station	Road Closed	Special Conditions Apply	StateBoundary	COUNTY	U	BLM
city	Boat Dock	Fishing Pier	Wildlife Viewing Area	Closed Road	PLSS Township	CITY	I	Federal Land
Parking	Campground	Headquarters	Other	Trail	PLSS First Division	STATE	S	Private
Comfort Station	Open Road	WHMA_Boundaries						Bureau of Indian Affairs
								State

Recreational opportunities at this WHMA are: Fishing, Hunting, Camping, Hiking, Trapping  
Amenities: Parking, Comfort Station, Horse Corrals  
Access Restrictions: Nov. 16 - May 31  
Other Restrictions: 14 day camping limit. No camping or parking on TR Bench between gravel pit and 2.5 miles up access road. Weed free certified hay only.  
Exceptions: Closed to vehicles Nov. 1 - May 31