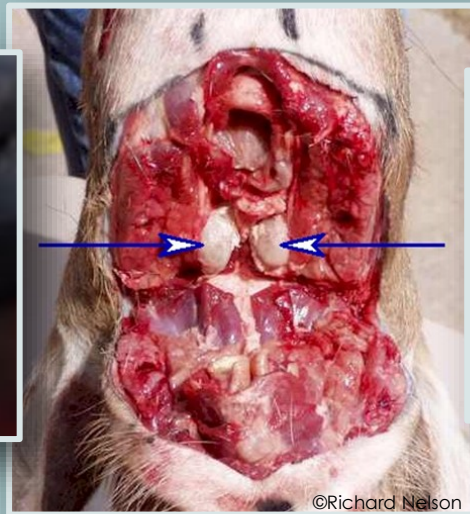


# TISSUES FOR CHRONIC WASTING DISEASE (CWD)

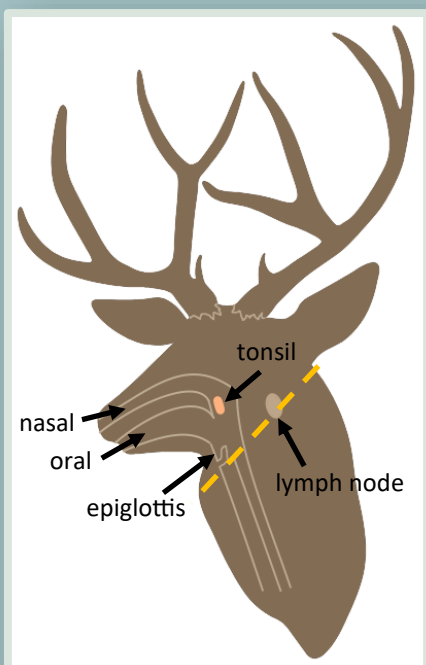
## #1 Preferred Sample: RETROPHARYNGEAL LYMPH NODE

- located deep in the space behind the trachea and oral cavity/esophagus\*
  - above the opening to the cerebellum and brain stem
    - 'bean' like shape and 'gummy bear' like feel
- usually marbled in color (unless head shot, then could be all red or black)



## Preference #2: TONSIL — FOR DEER SPECIES ONLY

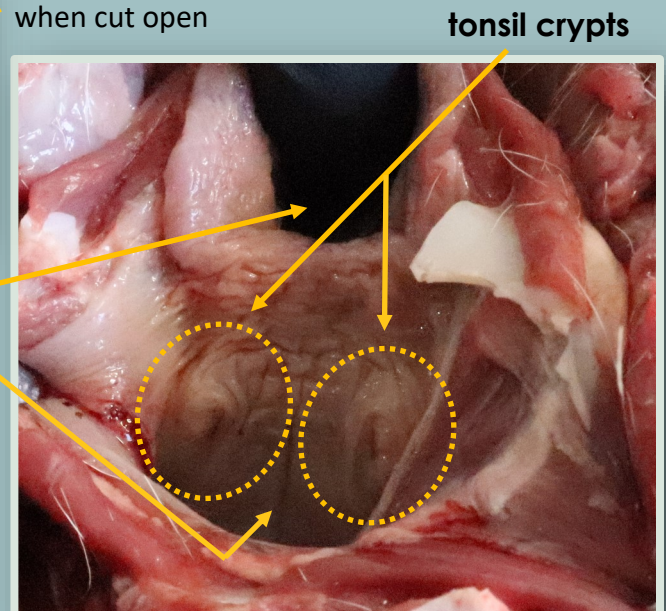
- located behind the tonsillar crypts—in the back of throat\*
  - spongier than lymph node, but similarly shaped
  - tonsil tissue contains folds – unique to tonsil



tonsil folds  
when cut open

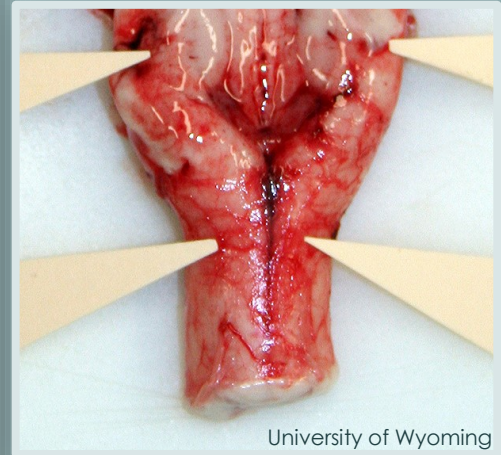
nasal cavity  
oral cavity

\* deer head placed  
upside down,  
starting from cut in  
neck  
epiglottis removed



### Preference #3: OBEX

- a bifurcation of the brain stem, located just beneath the cerebellum
  - located 2" - 3" inside skull socket (occipital condyles)
  - identified by the 'V' shape on the top surface
  - 'V' must be identifiable for sample to be testable

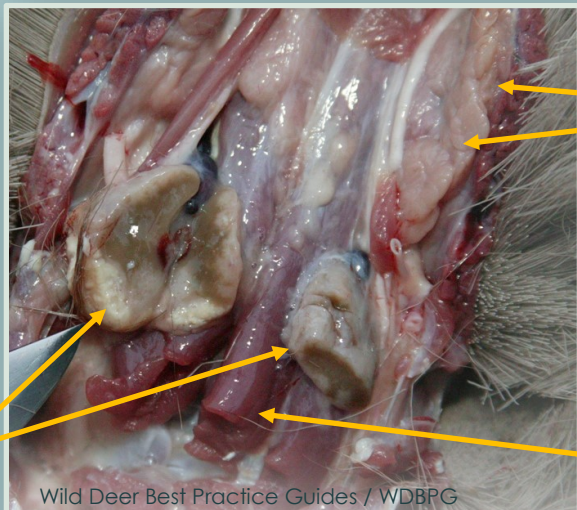


University of Wyoming

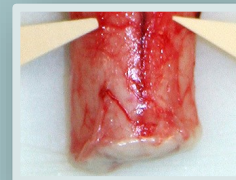
## UNTESTABLE SAMPLES

### FREQUENTLY SUBMITTED

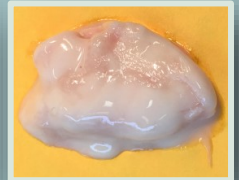
- **salivary gland** – uniform tan/pink, resembles chewed bubble gum
- **thyroid gland** – on neck below larynx, attached to trachea, long and flat
  - **muscle/meat**
  - **brain stem (no 'V') or unidentifiable brain matter**



Wild Deer Best Practice Guides / WDBPG



obex attempt: 'V' not visible



thyroid

