

What is the Wyoming Cutt-Slam?

A program designed to encourage anglers to learn more about Wyoming's cutthroat sub-species and develop more appreciation and support of the Wyoming Game and Fish Department's cutthroat management program.

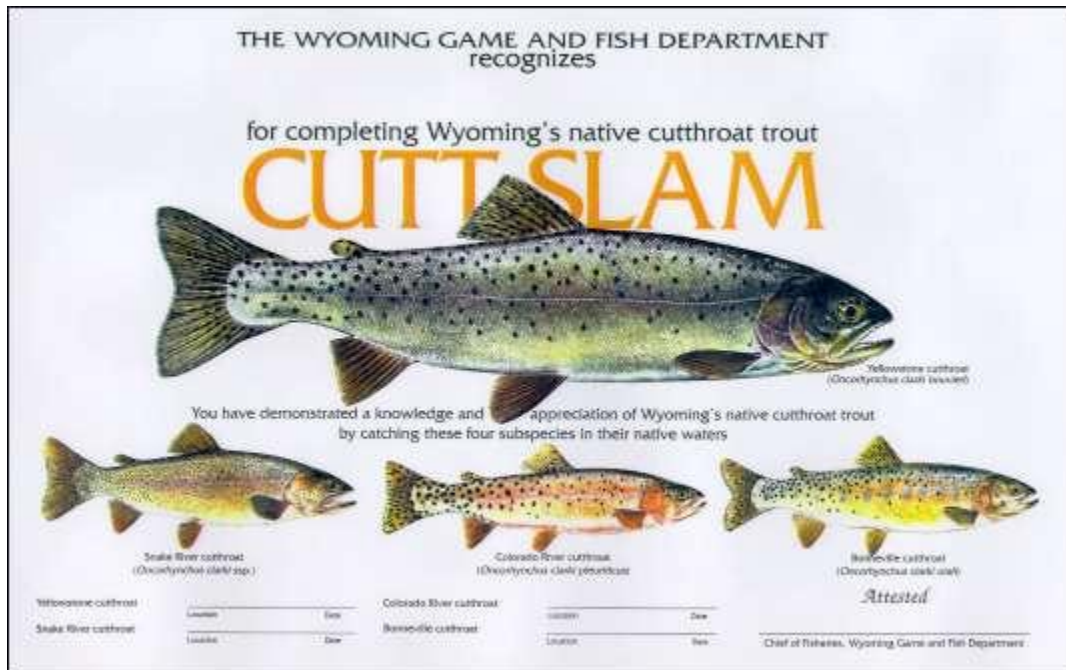
What you do:

- Catch Wyoming's four cutthroat sub-species in their native range in Wyoming.
- Take a photo of each fish and label it. You don't have to be in the picture and size of the fish doesn't matter. Please make sure pictures are clear enough for species identification.
- Complete the Cutt-Slam Application and submit with a photo of each fish to: wgf-cuttslam@wyo.gov, a local Game and Fish Regional Office, or the Cheyenne Headquarters located at:

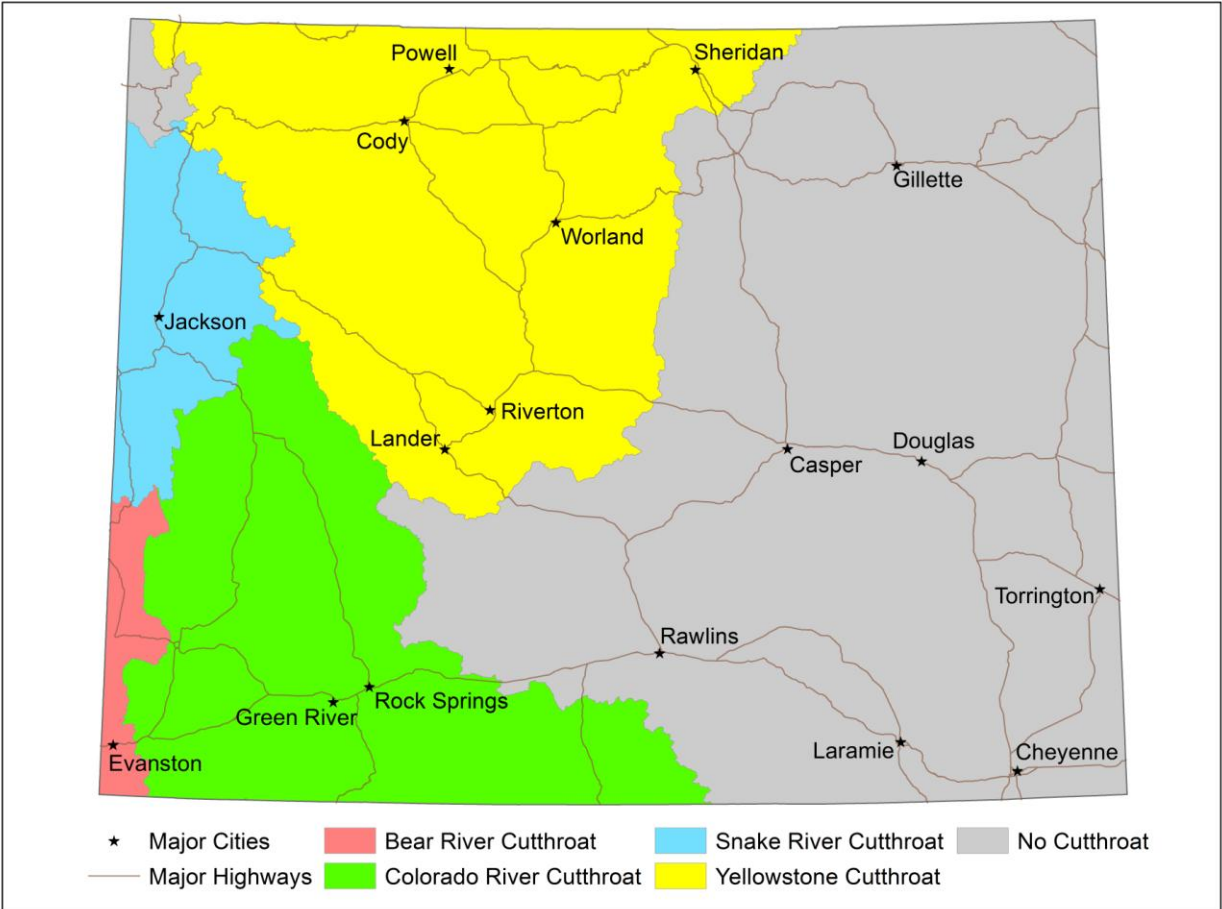
Wyoming Game and Fish Department
Fish Division
5400 Bishop Blvd.
Cheyenne, WY 82006

What we do:

- Once we receive documentation that you have caught all four sub-species, we will send you a color certificate featuring the four sub-species recognizing your accomplishment. One certificate per person, please.



Wyoming's Cutthroat Waters





COLORADO RIVER CUTTHROAT

Found in select waters within the Green River Drainage including but not restricted to:

DRAINAGE NAME	PRIMARY CONTACT
Tosi Creek, Rock Creek, and Gypsum Creek watersheds	Pinedale Regional Office
Horse Creek watershed	Pinedale Regional Office
Cottonwood Creek watershed	Pinedale Regional Office
North Piney Creek watershed including North Piney Lake	Pinedale Regional Office
South Piney Creek watershed	Pinedale Regional Office
LaBarge Creek watershed	Pinedale Regional Office
Hams Fork River watershed	Green River Regional Office
Little Snake River watershed	Green River Regional Office
Blacks Fork River watershed	Green River Regional Office
Smiths Fork River of the Blacks Fork watershed	Green River Regional Office

Green River Regional Office Pinedale Regional Office phone: 307-367-4352 or In-State Only at 1-800-452-9107 and the Green River Regional Office in Green River phone: 307-875-3223 or In-State Only at 1-800-843-8096



BONNEVILLE CUTTHROAT (BEAR RIVER CUTTHROAT)

Found in select waters within Bear River Drainage including but not restricted to:

DRAINAGE NAME	PRIMARY CONTACT
Smiths Fork River of the Bear River including Hobble Creek and Lake Alice	Pinedale Regional Office
Thomas Fork River including Salt Creek	Pinedale Regional Office
Sulphur Creek Reservoir	Green River Regional Office

Pinedale Regional Office phone: 307-367-4352 or In-State Only at 1-800-452-9107 and the Green River Regional Office in Green River phone: 307-875-3223 or In-State Only at 1-800-843-8096



SNAKE RIVER CUTTHROAT

Found in most waters within the Snake River Drainage including but not restricted to:

DRAINAGE NAME	PRIMARY CONTACT
Hoback River watershed	Jackson Regional Office
Salt River watershed	Jackson Regional Office
Greys River watershed	Jackson Regional Office
Gros Ventre watershed	Jackson Regional Office
Jackson Lake	Jackson Regional Office
Palisades Reservoir	Jackson Regional Office

Jackson Regional Office phone: 307-733-2321 or In-State Only at 1-800-423-4113



YELLOWSTONE CUTTHROAT

Found in select waters within the headwaters of the Missouri River Drainage including but not restricted to:

DRAINAGE NAME	PRIMARY CONTACT
Yellowstone River watershed including Yellowstone Lake	Cody Regional Office
Clarks Fork River watershed	Cody Regional Office
Big Horn River watershed	Cody Regional Office
Shoshone River watershed	Cody Regional Office
Buffalo Bill Reservoir	Cody Regional Office
Little Big Horn River watershed	Sheridan Regional Office
Wind River watershed	Lander Regional Office

Cody Regional Office phone: 307-527-7125 or In-State Only at 1-800-654-1178 and the Sheridan Regional Office phone: 307-672-7418 or In-State Only at 1-800-331-9834