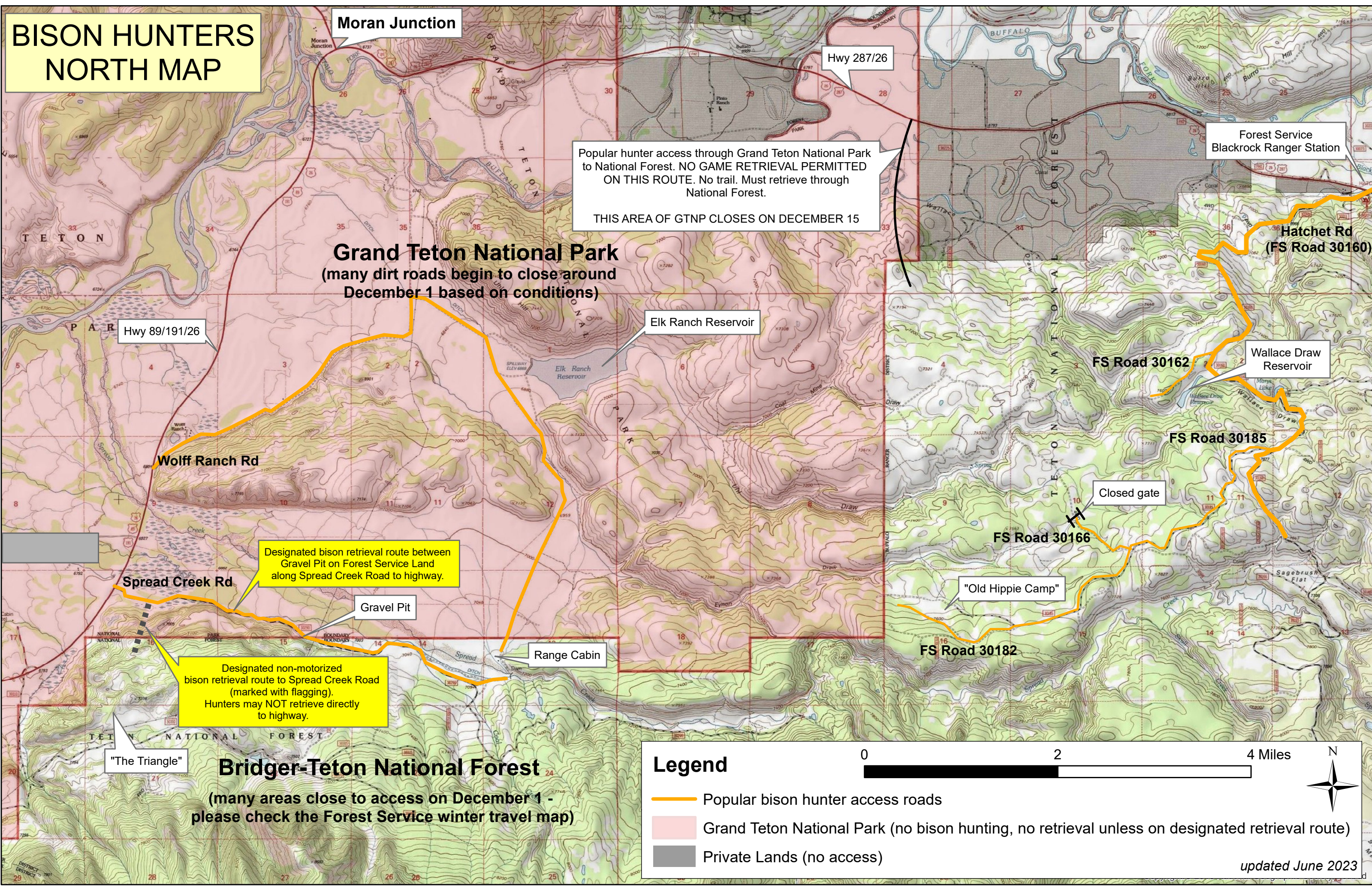


BISON HUNTERS NORTH MAP



Moran Junction

Hwy 287/26

Popular hunter access through Grand Teton National Park to National Forest. NO GAME RETRIEVAL PERMITTED ON THIS ROUTE. No trail. Must retrieve through National Forest.

THIS AREA OF GTNP CLOSES ON DECEMBER 15

Forest Service
Blackrock Ranger Station

Grand Teton National Park
(many dirt roads begin to close around December 1 based on conditions)

Hatchet Rd
(FS Road 30160)

Hwy 89/191/26

Elk Ranch Reservoir

FS Road 30162

Wallace Draw Reservoir

FS Road 30185

Wolf Ranch Rd

Closed gate

FS Road 30166

Designated bison retrieval route between Gravel Pit on Forest Service Land along Spread Creek Road to highway.

Spread Creek Rd

Gravel Pit

"Old Hippy Camp"

FS Road 30182

Range Cabin

Designated non-motorized bison retrieval route to Spread Creek Road (marked with flagging). Hunters may NOT retrieve directly to highway.

"The Triangle"

Bridger-Teton National Forest

(many areas close to access on December 1 - please check the Forest Service winter travel map)

Legend

- Popular bison hunter access roads
- Grand Teton National Park (no bison hunting, no retrieval unless on designated retrieval route)
- Private Lands (no access)

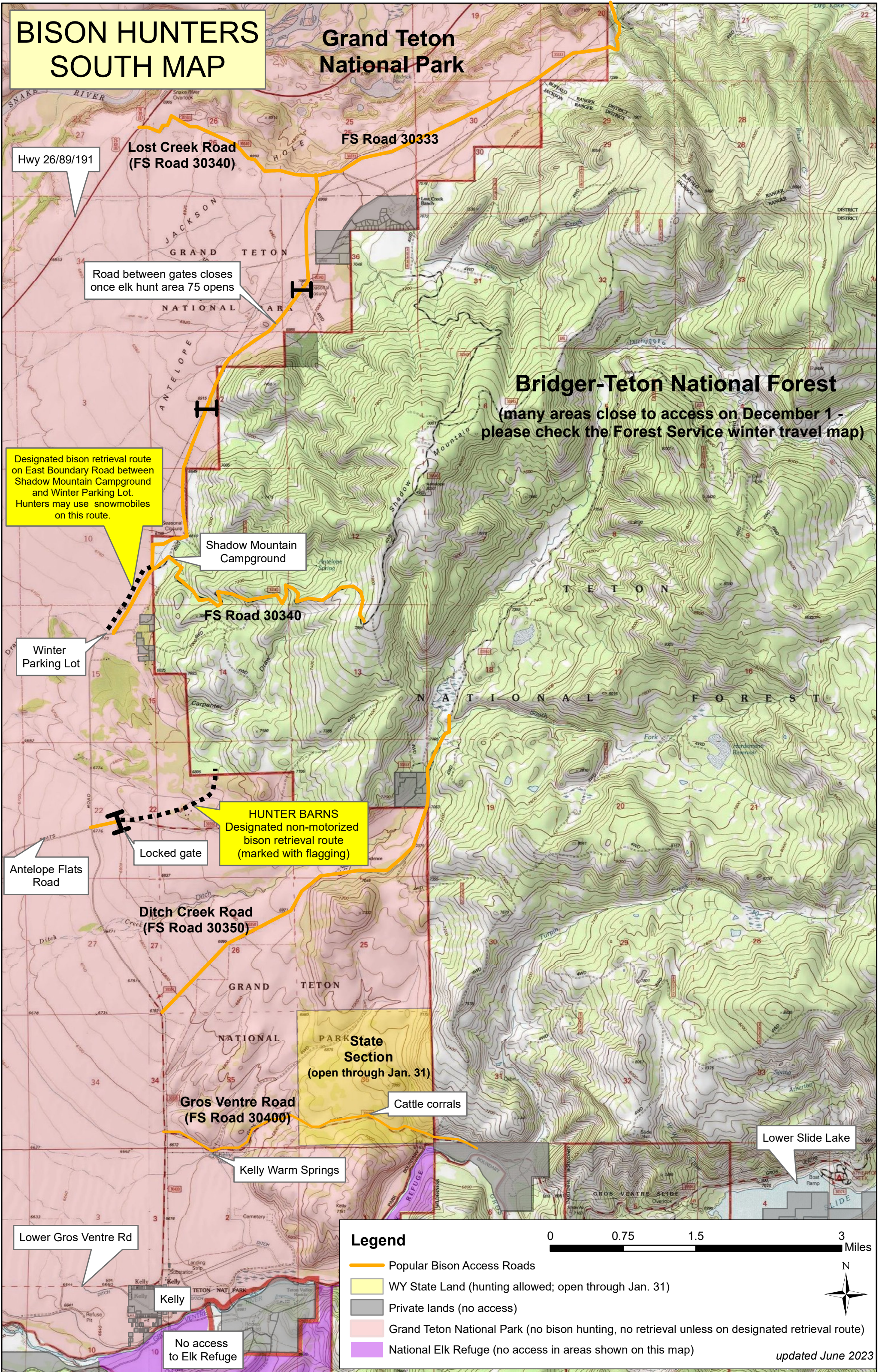
0 2 4 Miles



updated June 2023

BISON HUNTERS SOUTH MAP

Grand Teton National Park



Bridger-Teton National Forest
(many areas close to access on December 1 - please check the Forest Service winter travel map)

Designated bison retrieval route on East Boundary Road between Shadow Mountain Campground and Winter Parking Lot. Hunters may use snowmobiles on this route.

Shadow Mountain Campground

Winter Parking Lot

Antelope Flats Road

Ditch Creek Road (FS Road 30350)

Gros Ventre Road (FS Road 30400)

Lower Gros Ventre Rd

Kelly

No access to Elk Refuge

HUNTER BARNs
Designated non-motorized bison retrieval route (marked with flagging)

Locked gate

State Section
(open through Jan. 31)

Cattle corrals

Kelly Warm Springs

Lower Slide Lake

Legend

- Popular Bison Access Roads
- WY State Land (hunting allowed; open through Jan. 31)
- Private lands (no access)
- Grand Teton National Park (no bison hunting, no retrieval unless on designated retrieval route)
- National Elk Refuge (no access in areas shown on this map)

0 0.75 1.5 3 Miles

N

updated June 2023