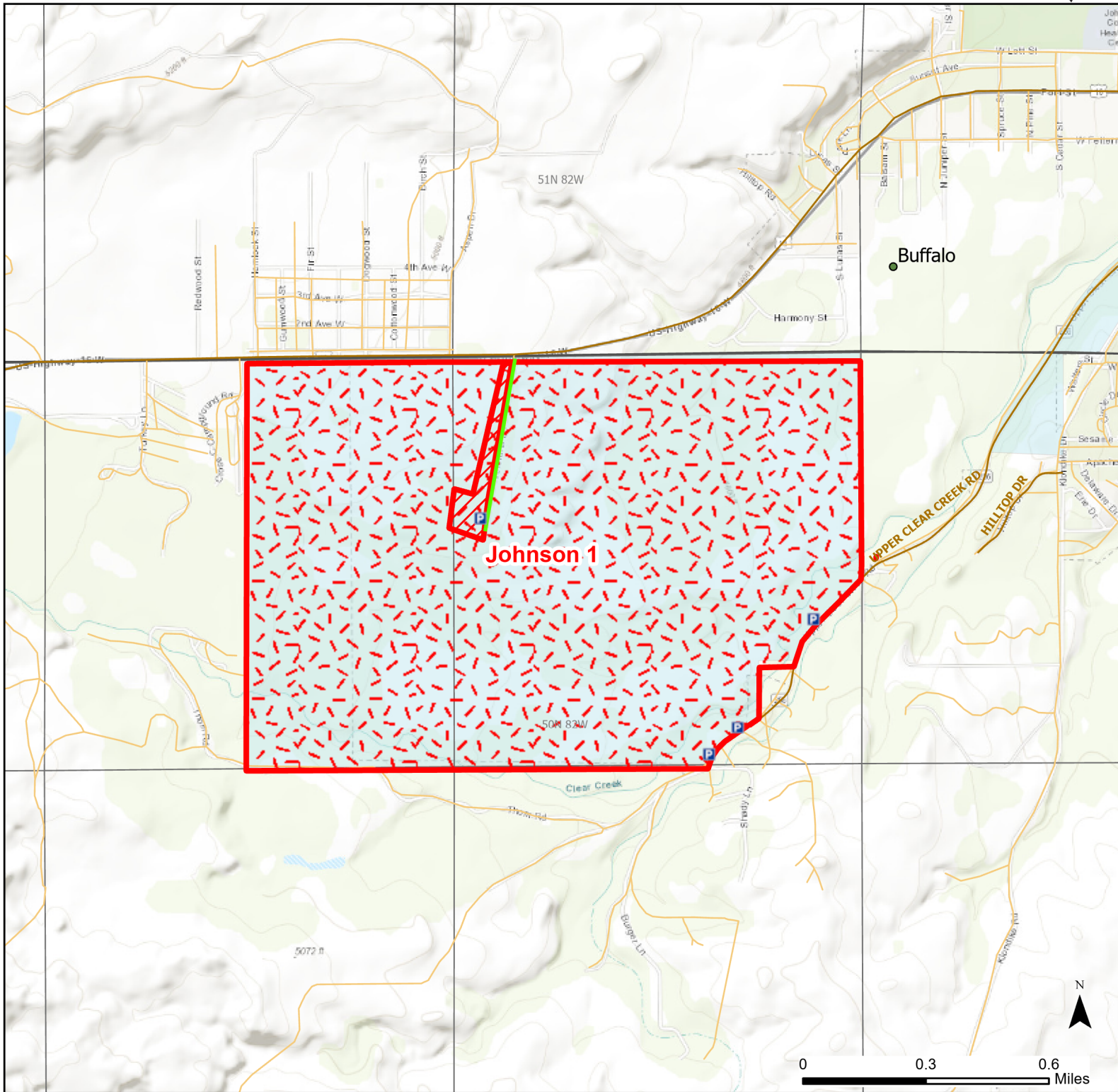




Johnson 1 Walk-in Hunting Area

Access Dates:
08/15 - 05/31
2023 Hunt Season



Parking	Closed Road	Boundary	Limited Range Weapons and Archery	State
Coupon Box	Roads	County Boundaries	Archery Only	DOD
Road Closed	Open Road	Other	CLOSED	BLM
Special Conditions Apply				Wyoming Game & Fish Dept.
				Forest Service
				Private

Species allowed to hunt: Pheasant, Sharp_tail Grouse, Blue Grouse, Partridge, Turkey, Rabbit, Antelope, Deer

Rules: Archery hunting only. Archers must wear fluorescent orange during the firearm season. All vehicles must park in designated parking areas only. Portable blinds may be used on a daily basis. Blinds must have owner's name and contact info affixed and may not be left in the field overnight. State lands are enrolled in this Walk-in Area. All access restrictions apply.

This map is for visual use, assistance and general location only, does not represent a survey, and is not to be used for legal conveyance. Hunt Area boundaries are approximate, consult Game and Fish Hunting Regulations for descriptions and restrictions. Access to these private lands for any commercial activity must be gained by contacting the individual landowner(s) directly.