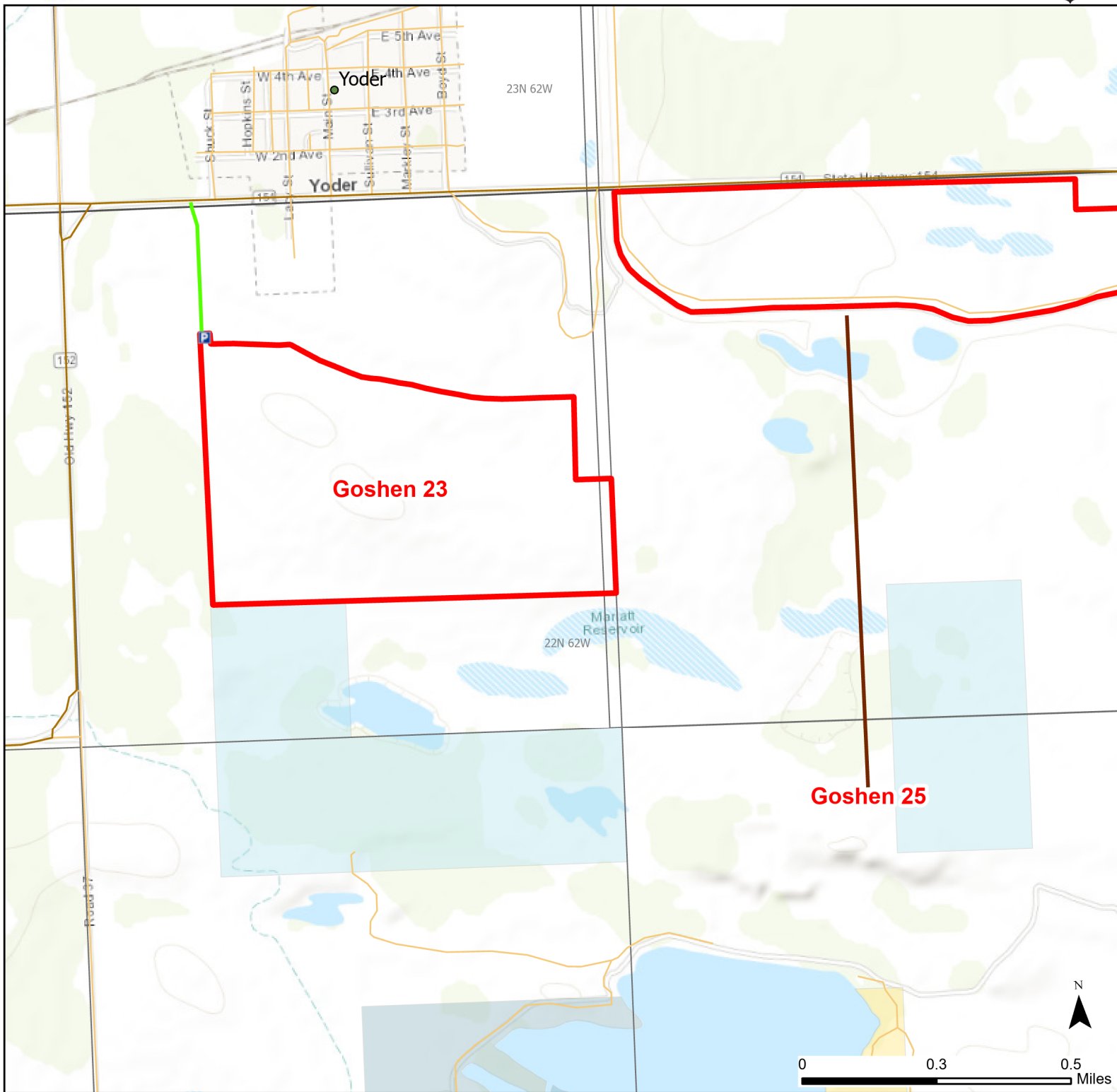




# Goshen 23 Walk-in Hunting Area

Access Dates:  
09/01 - 05/31  
2023 Hunt Season



Parking	Closed Road	Boundary	Limited Range Weapons and Archery	State
Coupon Box	Roads	Archery Only	Other	DOD
Road Closed	County Boundaries	CLOSED		BLM
Open Road				Wyoming Game & Fish Dept.
Special Conditions Apply				Forest Service
				Private

Species allowed to hunt: Waterfowl, Pheasant, Sharp-tailed Grouse, Doves, Partridge, Turkey, Rabbit, Antelope, Deer

Rules: All vehicles must park in designated parking areas only. Portable blinds may be used on a daily basis. Blinds must have owner's name and contact info affixed and may not be left in the field overnight. Motorized vehicle access limited to designated roads only. Designated roads are marked with a white arrow.

This map is for visual use, assistance and general location only, does not represent a survey, and is not to be used for legal conveyance. Hunt Area boundaries are approximate, consult Game and Fish Hunting Regulations for descriptions and restrictions. Access to these private lands for any commercial activity must be gained by contacting the individual landowner(s) directly.