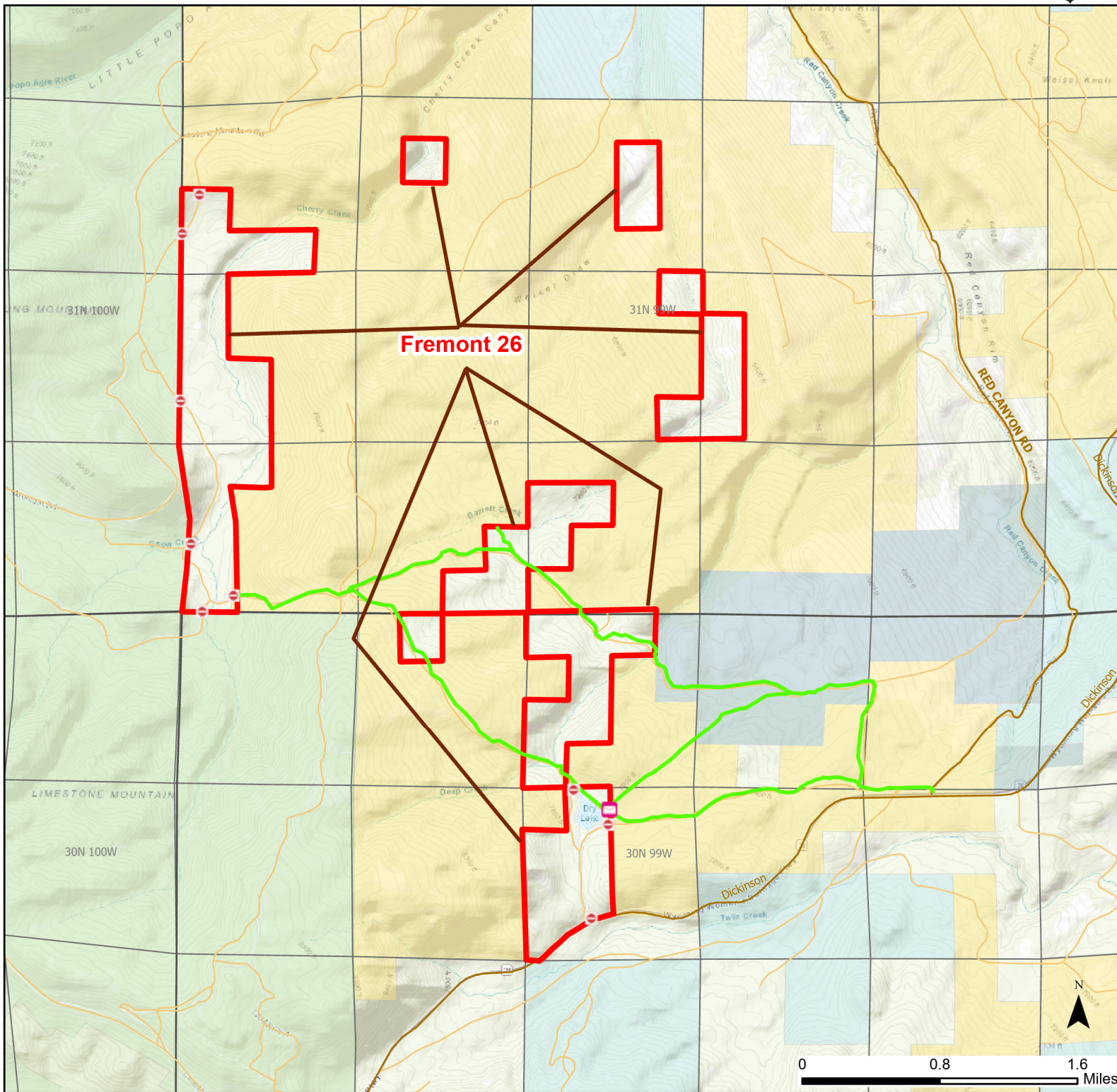




# Fremont 26 Walk-in Hunting Area

Access Dates:  
08/15 - 11/30  
2023 Hunt Season



|                          |                   |              |                                   |                           |
|--------------------------|-------------------|--------------|-----------------------------------|---------------------------|
| Parking                  | Closed Road       | Boundary     | Limited Range Weapons and Archery | State                     |
| Coupon Box               | Roads             | Archery Only | Other                             | DOD                       |
| Road Closed              | County Boundaries |              | CLOSED                            | BLM                       |
| Open Road                |                   |              |                                   | Wyoming Game & Fish Dept. |
| Special Conditions Apply |                   |              |                                   | Forest Service            |
|                          |                   |              |                                   | Private                   |

Species allowed to hunt: Sage Grouse, Blue Grouse, Ruffed Grouse, Partridge, Antelope, Deer, Elk, Moose

Rules: All vehicles must park in designated parking areas only. Motorized vehicle access limited to designated roads only. Designated roads are marked with a white arrow. Hunters allowed to hunt off horseback. Please deposit landowner coupons in containers provided on this Walk-in Area. Travel restricted to highways and county roads when conditions are wet or muddy.

This map is for visual use, assistance and general location only, does not represent a survey, and is not to be used for legal conveyance. Hunt Area boundaries are approximate, consult Game and Fish Hunting Regulations for descriptions and restrictions. Access to these private lands for any commercial activity must be gained by contacting the individual landowner(s) directly.