



SUBLETTE ANTELOPE MIGRATION CORRIDOR

WYOMING GAME AND FISH DEPARTMENT

IDENTIFYING A MIGRATION CORRIDOR: THE SCIENCE AND PATH TO DESIGNATION

- Wyoming is home to important migrations, including one of the longest pronghorn migrations in the continental United States. Each fall the Sublette antelope herd migrates south from summer ranges in the foothills of the Wyoming Range, Bondurant and Jackson Hole areas to lower elevation winter ranges near Pinedale, Green River and Rock Springs to escape the harsh winter conditions.
- With the formal identification of the corridor, additional funding opportunities become available for conservation based projects on private and public lands.
- Wyoming is committed to conserving these vital movements, which help maintain populations by connecting seasonal ranges they depend on for sustainability.
- The Department is following the public designation process outlined in the Governor's Migration Corridor Executive Order.



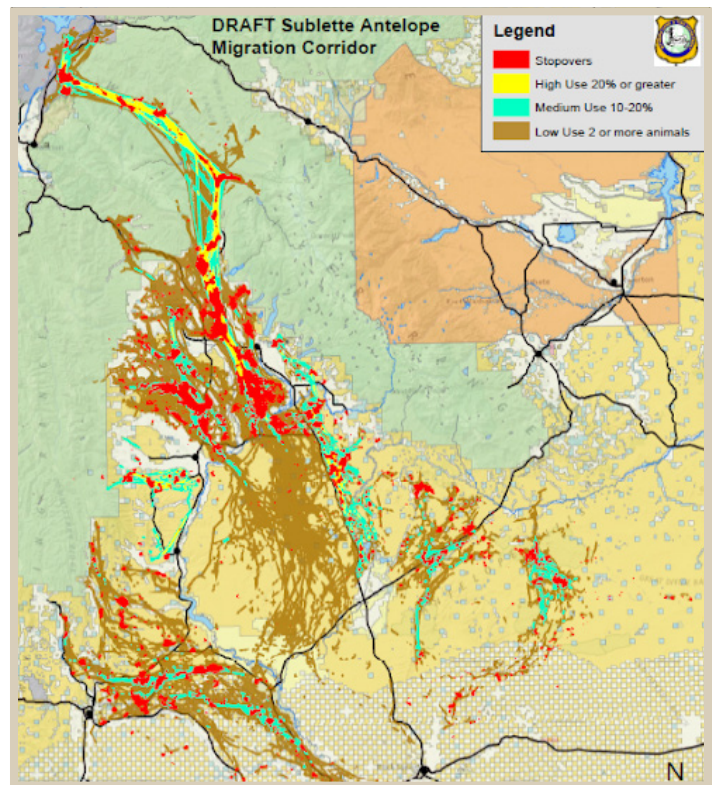
THE SCIENCE

- Over the past 20 years, Game and Fish wildlife managers and research partners have collected unprecedented GPS data from over 415 individual collared antelope.
- The GPS identified paths with a 300 meter buffer have revealed important pathways antelope use, potential obstacles they face (bottlenecks) and stop-over areas where antelope spend the majority of their time resting and foraging along their journey.
- Collar data was used to define what portions of the migration corridor were high, medium and low use.



NEXT STEPS

- The Draft Threat Evaluation, maps and public comment form can be found by scanning the QR code below or by visiting the Game and Fish website.
- The deadline to submit public comment is Jan. 5, 2024. Comments can be submitted online or by mail to the Pinedale Regional Game and Fish Office, PO Box 850, Pinedale, WY 82941.
- The Wyoming Game and Fish Commission will consider all written comments before the tentative March Commission meeting. Additionally, the public will have the opportunity for comment during the Commission meeting.
- The Commission determines the next steps toward identifying and designating the corridor. If the Commission votes to move forward, the Department will draft the Risk Assessment to provide to the Governor.
- A formal designation is determined by the Governor.



FAQ

How does a formal designation affect private lands?

- The Executive Order does not apply regulations to private land.
- Private landowners have an opportunity to access additional funding for conservation work.

How does a formal designation affect public lands?

- Does not affect federal grazing permits or access to public lands.
- Does not affect existing decisions like energy developments or other permits.
- New state permitted activities and disturbances on public lands will be evaluated on a case-by-case basis to minimize impacts to the corridor.



Provide public comment
and learn more about the
proposed migration corridor.

