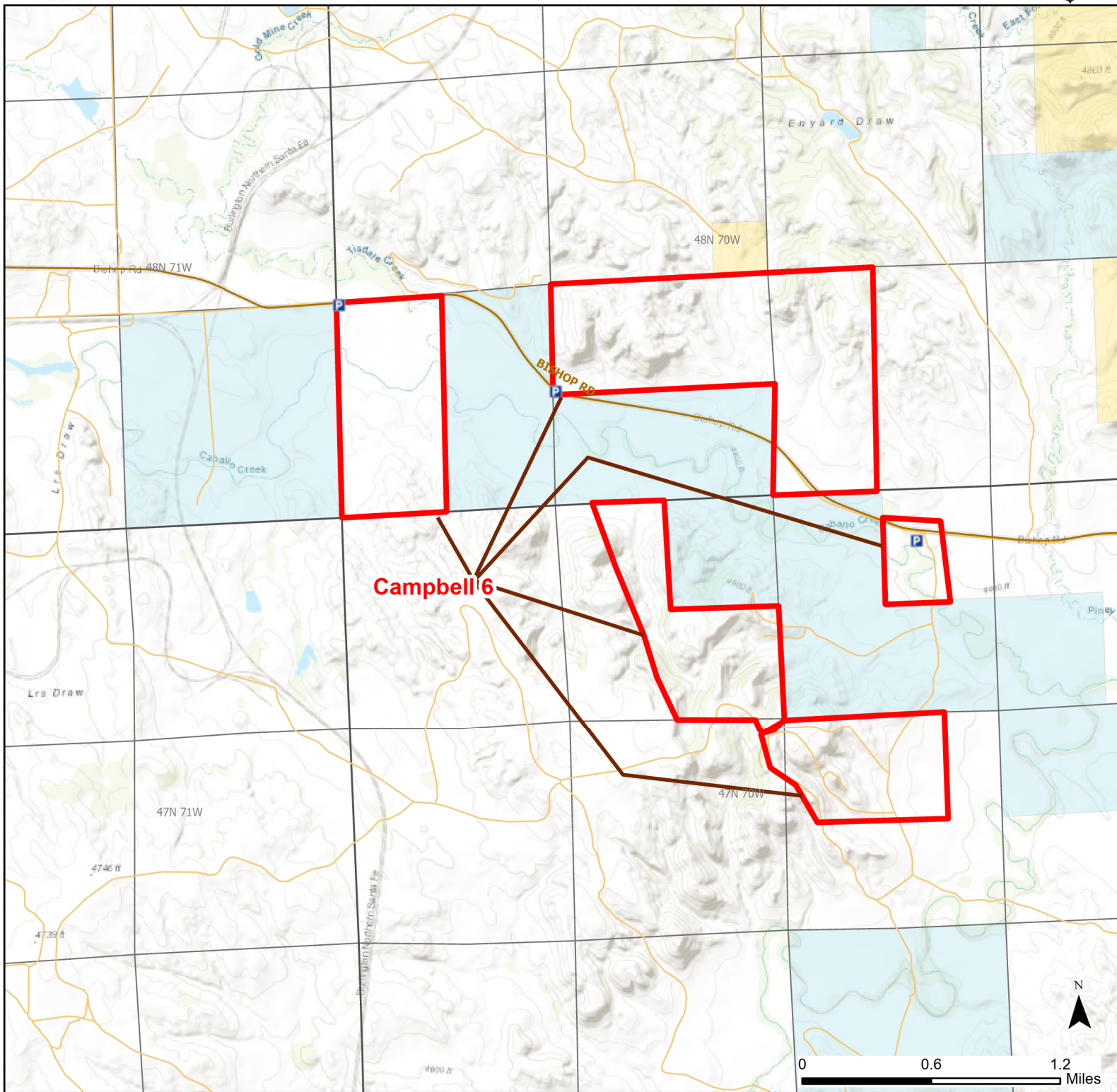




# Campbell 6 Walk-in Hunting Area

Access Dates:  
08/15 - 05/31  
2023 Hunt Season



**Campbell 6**

Parking	Closed Road	Boundary	Limited Range Weapons and Archery	State
Coupon Box	Roads	County Boundaries	Archery Only	DOD
Road Closed	County Boundaries	Boundary	Other	BLM
Open Road	County Boundaries	Boundary	CLOSED	Wyoming Game & Fish Dept.
Special Conditions Apply	County Boundaries	Boundary		Forest Service
				Private

Species allowed to hunt: Waterfowl, Sharp-tailed Grouse, Doves, Partridge, Turkey, Rabbit, Antelope, Deer, Elk

Rules: All vehicles must park in designated parking areas only. Portable blinds may be used on a daily basis. Blinds must have owner's name and contact info affixed and may not be left in the field overnight.

This map is for visual use, assistance and general location only, does not represent a survey, and is not to be used for legal conveyance. Hunt Area boundaries are approximate, consult Game and Fish Hunting Regulations for descriptions and restrictions. Access to these private lands for any commercial activity must be gained by contacting the individual landowner(s) directly.